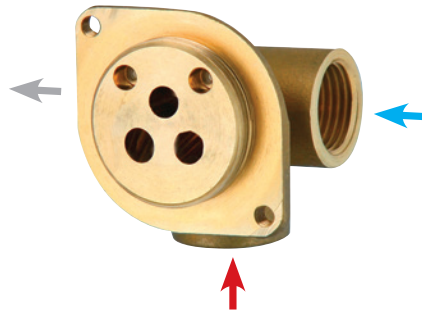
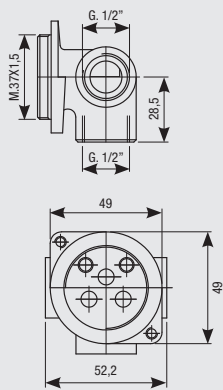


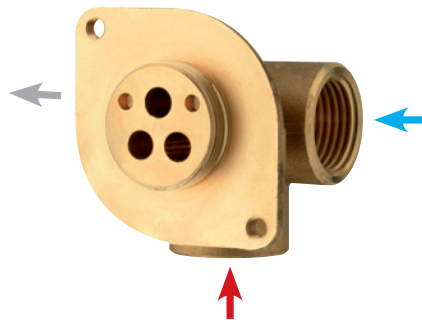
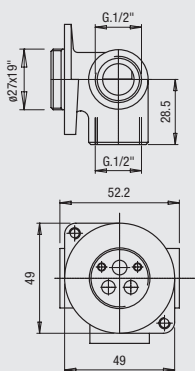
**Art. 1174**

cartuccia  $\varnothing$  40 - cartridge  $\varnothing$  40 - Kartusche  $\varnothing$  40



**Art. 1174/35**

cartuccia  $\varnothing$  35 - cartridge  $\varnothing$  35 - Kartusche  $\varnothing$  35



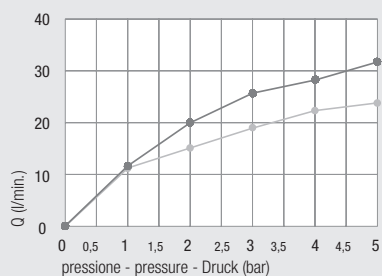
**Art. 1174/25**

cartuccia  $\varnothing$  25 - cartridge  $\varnothing$  25 - Kartusche  $\varnothing$  25

Diagramma di portata (uscita libera)

*Flow diagram (free exit)*

Diagramm der Durchflussleistung (freier Ausgang)



—●—  $\varnothing$  40 -  $\varnothing$  35  
—■—  $\varnothing$  35  
—▲—  $\varnothing$  25

Accessori - *Accessories* - Zubehörteile

**Art. 1161**  
Anello sede cartuccia  
*Cartridge ring seat*  
Kartuschenringsitz



**Art. 1013/35**  
Anello sede cartuccia  
*Cartridge ring seat*  
Kartuschenringsitz



**Art. 1013/25**  
Anello sede cartuccia  
*Cartridge ring seat*  
Kartuschenringsitz



**Art. 1500**  
Cappuccio ABS  
*ABS cap*  
ABS-Kappe



**Art. 1003SF**  
Cappuccio ABS  
*ABS cap*  
ABS-Kappe



**Art. 1003/25**  
Cappuccio ABS  
*ABS cap*  
ABS-Kappe



**Art. 1501**  
Ghiera serraggio  
*Ring nut*  
Gewindeverschraubung



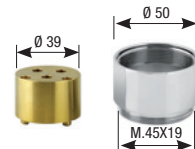
**Art. 1004BS**  
Ghiera  
*Ring nut*  
Gewindehülse



**Art. 1004/25**  
Ghiera  
*Ring nut*  
Gewindehülse



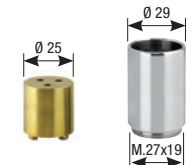
**Art. 600**  
Kit prolunga sede cartuccia  
*Extension kit for cartridge seat*  
Verlängerungsbausatz Kartuschenring



**Art. 600/35**  
Kit prolunga sede cartuccia  
*Extension kit for cartridge seat*  
Verlängerungsbausatz Kartuschenring



**Art. 600/25**  
Kit prolunga sede cartuccia  
*Extension kit for cartridge seat*  
Verlängerungsbausatz Kartuschenring



**Art. PR50**  
Protezione mix  
*Mix protection*  
Schutzvorrichtung Mixer



**Art. PR42**  
Protezione mix  
*Mix protection*  
Schutzvorrichtung Mixer



**Art. PR29**  
Protezione mix  
*Mix protection*  
Schutzvorrichtung Mixer



**Art. 1160PRPOL**  
Protezione  
*Protection*  
Schutzvorrichtung

