

Miscelatore doccia incasso

Concealed shower mixer

Einbau-Mischbatterie für Duschen

Ø35 2 exits



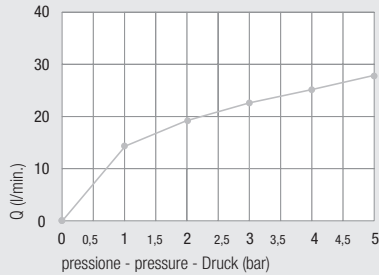
con deviatore **click-clack** (Art. 1502 KS)
with **click-clack** diverter (Art. 1502 KS)
mit **click - clack** (Art. 1502 KS)

DZR Available

Diagramma di portata (uscita libera)

Flow diagram (free exit)

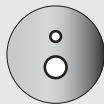
Diagramm der Durchflussleistung (freier Ausgang)



Piastre idonee - Appropriate plates - Passende Platten pag. 88



Art. 1182...



Art. 1192...



Art. 1192/P...



Art. 1030CA



Art. 1186...

Design



Art.Q

Versione quadrata
Square version
Quadratische Ausführung



Art.MN

Versione minimal ottone cromato o ABS
Minimal design version brass-chrome or ABS
Minimalistische Ausführung Verchromtes Messing oder ABS

kit prolunga sede cartuccia
Extension kit for cartridge seat
Verlängerungsbausatz Kartuschensitz

Art. 600/35



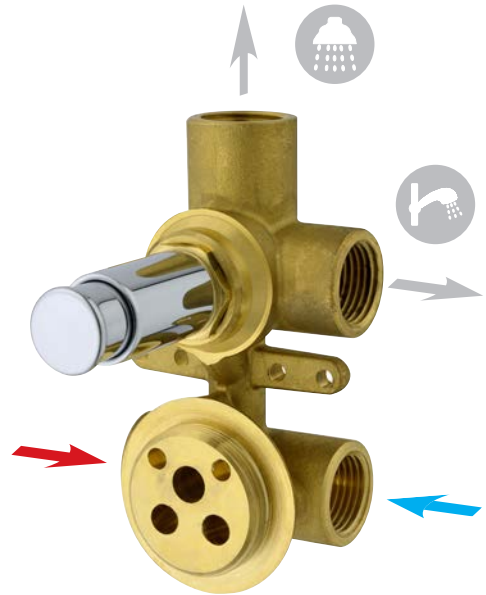
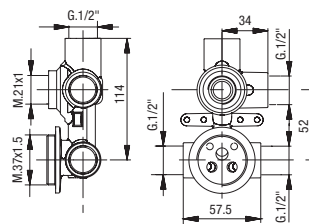
Art. 600/35 SC



1043/35

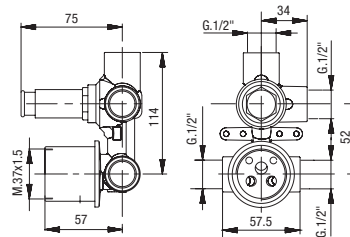
1068PRO

Art. 2182/35 K



Art. 2192/35 K

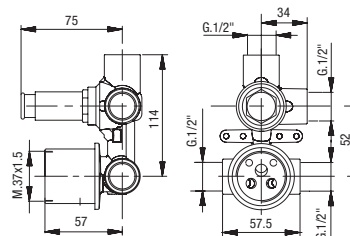
Con bicchiere
With cartridge ring seat
Mit Kartuschenringsitz



Art. 2192/35 K SC

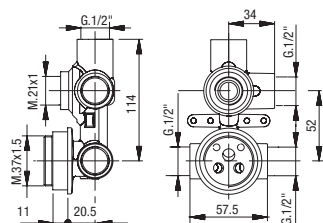


Con cappuccio scorrevole
With sliding sleeve
Mit Schiebhaube



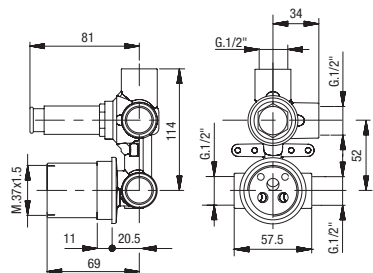
Versione prolungata
Extended version
Erweiterte Version

Art. 2182/35 AL K



Art. 2192/35 AL K

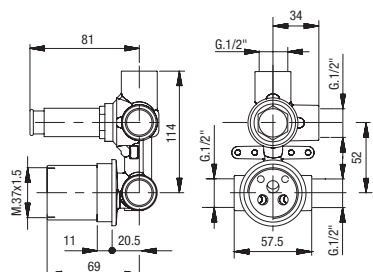
Con bicchiere
 With cartridge ring seat
 Mit Kartuschenringsitz



Art. 2192/35 AL K SC



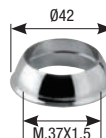
Con cappuccio scorrevole
 With sliding sleeve
 Mit Schiebehaube



Art. 1013/35
 Anello sede cartuccia
 Cartridge ring seat
 Kartuschenringsitz



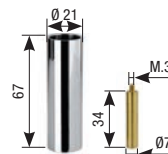
Art. 1003SF
 Cappuccio ABS
 ABS cap
 ABS-Kappe



Art. 1004BS
 Ghiera
 Ring nut
 Gewindehülse



Art. 610
 Prolunga deviatore
 Diverter extension
 Verlängerung Umstellventil



Art. 1468
 Anello sede cartuccia
 Cartridge ring seat
 Kartuschenringsitz



Art. 1465
 Cappuccio scorrevole
 Sliding sleeve
 Schiebehaube



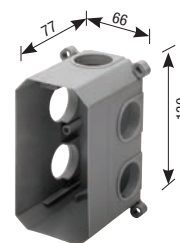
Art. PR42
 Protezione mix
 Mix protection
 Schutzeinrichtung Mixer



Art. PR20
 Protezione in plastica
 Plastic protection
 Kunststoffschutzeinrichtung



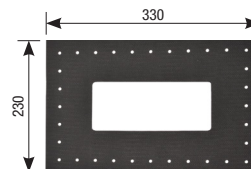
Art. 3182CG (pag. 101)
 Scatola di assemblaggio
 Multipurpose assembling box
 Montagegehäuse



Art. 3183
 Coperchio scatola
 Box cover
 Gehäuseabdeckung



Art. 3181ME
 Membrana isolante
 Insulating membrane
 Isolierungsmembran



Art. 3185
 Prolunga G.1/2"
 Extension G.1/2"
 Verlängerung mit 1/2"-Drehung



Art. 3181G1/2
 Guarnizione G.1/2"
 Gasket G.1/2"
 Dichtung mit 1/2"-Drehung

