

# Miscelatore **lavabo** incasso

## Concealed **basin** mixer

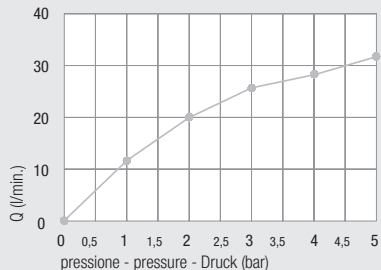
### Einbau-Mischbatterie für **Waschtische**

Ø 35

Diagramma di portata  
(uscita libera)

Flow diagram  
(free exit)

Diagramm der  
Durchflussleistung  
(freier Ausgang)



Piastre idonee - *Appropriate plates* - Passende Platten pag. 88



Art. 1194...



Art. 1198...



Art. 1002...



Art. 1235CA



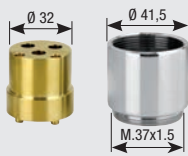
Art. 1050CA...

kit prolunga sede cartuccia

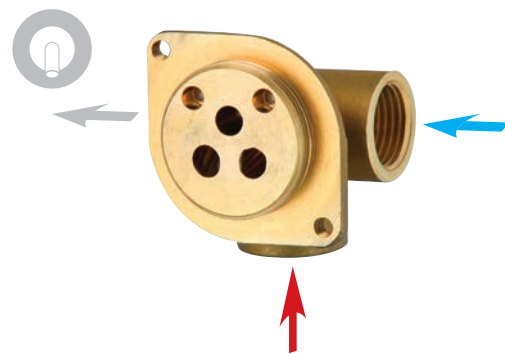
*Extension kit for cartridge seat*

Verlängerungsbausatz Kartuschensitz

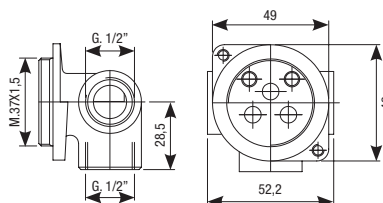
Art. 600/35



Art. 600/35 SC

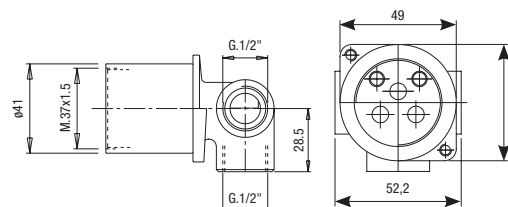


Art. 1174/35



Art. 2174/35

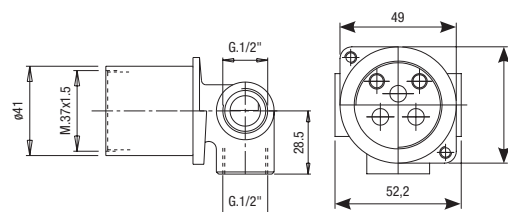
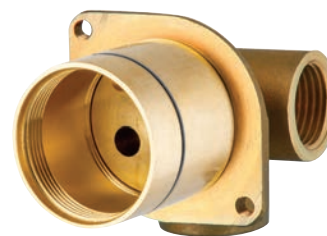
Con bicchiere  
*With cartridge ring seat*  
Mit Kartuschenringsitz



Art. 3174/35

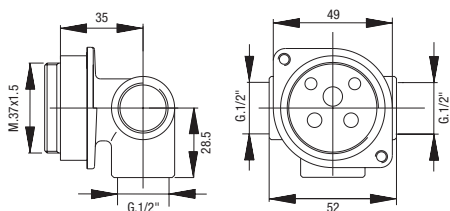
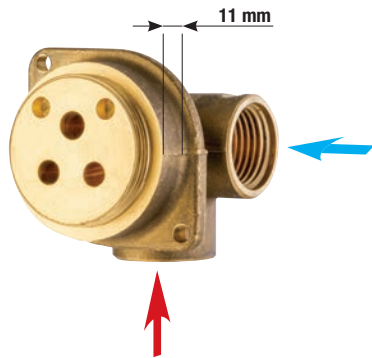


Con cappuccio scorrevole  
*With sliding sleeve*  
Mit Schiebehaube



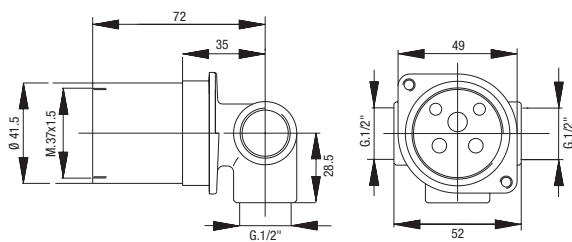
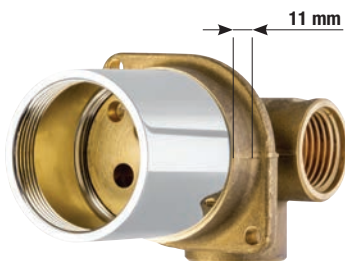
**Versione prolungata**  
**Extended version**  
**Erweiterte Version**

**Art. 1174/35 AL**



**Art. 2174/35 AL**

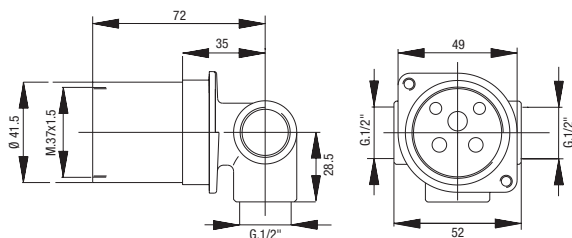
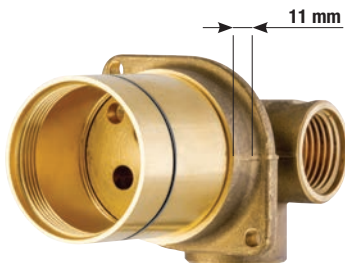
Con bicchiere  
*With cartridge ring seat*  
 Mit Kartuschenringsitz



**Art. 3174/35 AL**



Con cappuccio scorrevole  
*With sliding sleeve*  
 Mit Schiebehaube



**Art. 1013/35**

Anello sede cartuccia  
*Cartridge ring seat*  
 Kartuschenringsitz



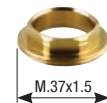
**Art. 1003SF**

Cappuccio ABS  
*ABS cap*  
 ABS-Kappe



**Art. 1004BS**

Ghiera  
*Ring nut*  
 Gewindehülse



**Art. 1468**

Anello sede cartuccia  
*Cartridge ring seat*  
 Kartuschenringsitz



**Art. 1465**

Cappuccio scorrevole  
*Sliding sleeve*  
 Schiebehaube



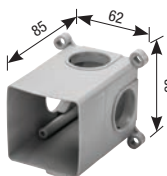
**Art. PR42**

Protezione mix  
*Mix protection*  
 Schutzvorrichtung Mixer



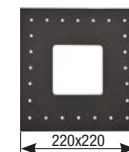
**Art. 3184 (pag. 94)**

Scatola di assemblaggio  
*Multipurpose assembling box*  
 Montagegehäuse



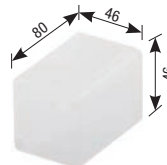
**Art. 3184ME**

Membrana isolante  
*Insulating membrane*  
 Isolierungsmembran



**Art. 3187**

Coperchio scatola  
*Box cover*  
 Gehäuseabdeckung



**Art. 3185**

Prolunga G.1/2"  
*Extension G.1/2"*

Verlängerung mit 1/2"-Drehung



**Art. 3181G1/2**

Guarnizione G.1/2"  
*Gasket G.1/2"*

Dichtung mit 1/2"-Drehung

