

# Miscelatore doccia incasso

## Concealed shower mixer

### Einbau-Mischbatterie für Duschen

Ø35 2 exits



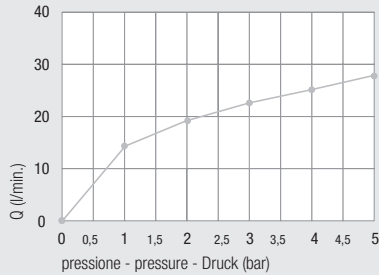
con deviatore a pulsante (Art. 1502)  
with push diverter (Art. 1502)  
mit Druckknopfumstellung (Art. 1502)

DZR Available

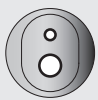
Diagramma di portata (uscita libera)

Flow diagram (free exit)

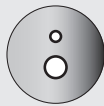
Diagramm der Durchflussleistung (freier Ausgang)



Piastre idonee - Appropriate plates - Passende Platten pag. 88



Art. 1182...



Art. 1192...



Art. 1192/P...



Art. 1030CA



Art. 1186...

Design



Art. ....Q

Versione quadrata  
Square version  
Quadratische Ausführung



Art. ....MN

Versione minimal ottone cromato o ABS  
Minimal design version brass-chrome or ABS  
Minimalistische Ausführung Verchromtes Messing oder ABS

kit prolunga sede cartuccia  
Extension kit for cartridge seat  
Verlängerungsbausatz Kartuschensitz

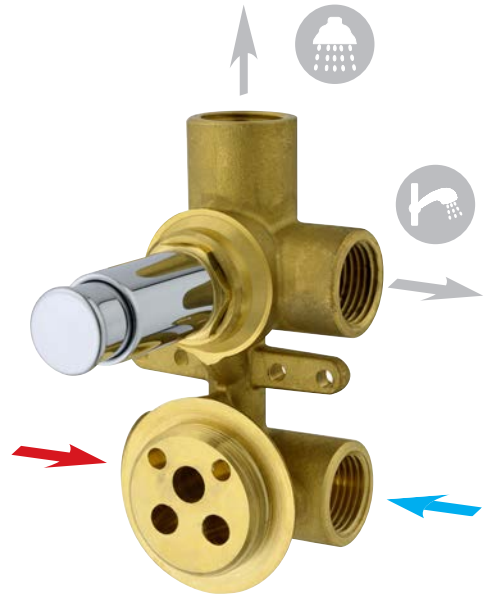
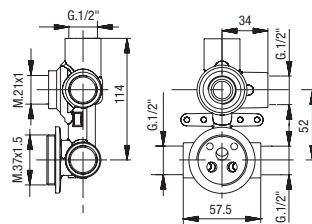
Art. 600/35



Art. 600/35 SC

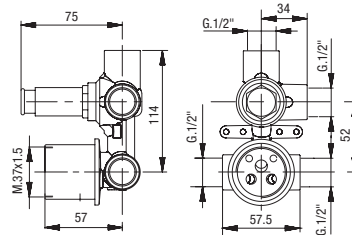


Art. 2180/35



Art. 2190/35

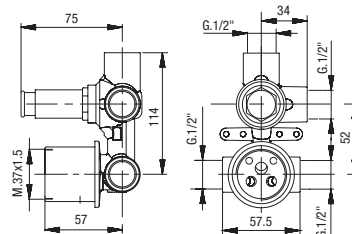
Con bicchiere  
With cartridge ring seat  
Mit Kartuschenringsitz



Art. 2190/35 SC



Con cappuccio scorrevole  
With sliding sleeve  
Mit Schiebhaube

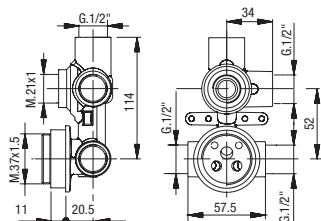


**Versione prolungata**  
**Extended version**  
**Erweiterte Version**



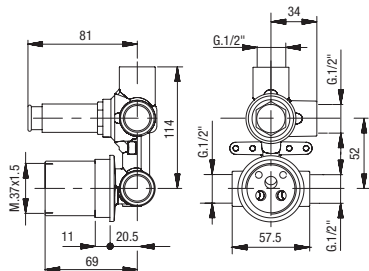
con deviatore a pulsante (Art. 1502 AL)  
with **push diverter** (Art. 1502 AL)  
mit **Druckknopfumstellung** (Art. 1502 AL)

**Art. 2180/35 AL**



**Art. 2190/35 AL**

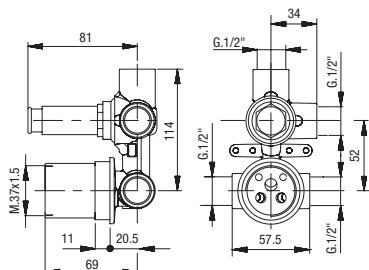
Con bicchiere  
With **cartridge ring seat**  
Mit Kartuschenringsitz



**Art. 2190/35 AL SC**



Con cappuccio scorrevole  
With **sliding sleeve**  
Mit Schiebehaube



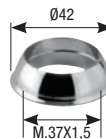
**Art. 1013/35**

Anello sede cartuccia  
**Cartridge ring seat**  
Kartuschenringsitz



**Art. 1003SF**

Cappuccio ABS  
**ABS cap**  
ABS-Kappe



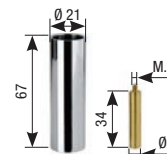
**Art. 1004BS**

Ghiera  
**Ring nut**  
Gewindehülse



**Art. 610**

Prolunga deviatore  
**Diverter extension**  
Verlängerung Umstellventil



**Art. 1468**

Anello sede cartuccia  
**Cartridge ring seat**  
Kartuschenringsitz



**Art. 1465**

Cappuccio scorrevole  
**Sliding sleeve**  
Schiebehaube



**Art. PR42**

Protezione mix  
**Mix protection**  
Schutzvorrichtung Mixer



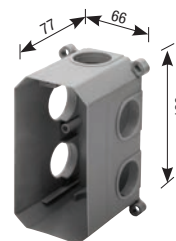
**Art. PR20**

Protezione in plastica  
**Plastic protection**  
Kunststoffschutzvorrichtung



**Art. 3182CG (pag. 101)**

Scatola di assemblaggio  
**Multipurpose assembling box**  
Montagegehäuse



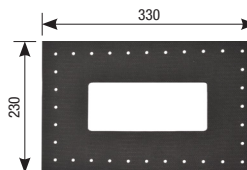
**Art. 3183**

Coperchio scatola  
**Box cover**  
Gehäuseabdeckung



**Art. 3181ME**

Membrana isolante  
**Insulating membrane**  
Isolierungsmembran



**Art. 3185**

Prolunga G. 1/2"  
**Extension G. 1/2"**  
Verlängerung mit 1/2"-Drehung



**Art. 3181G1/2**

Guarnizione G. 1/2"  
**Gasket G. 1/2"**  
Dichtung mit 1/2"-Drehung



**Art. 3186**

Prolunga G. 3/4"  
**extension G. 3/4"**  
Verlängerung mit 3/4"-Drehung



**Art. 3181G3/4**

Guarnizione G. 3/4"  
**Gasket G. 3/4"**  
Dichtung mit 3/4"-Drehung