

# Miscelatore **vasca** incasso

## Concealed **bath shower** mixer

### Einbau-Mischbatterie für **Badewannen**

Ø35 2 exits



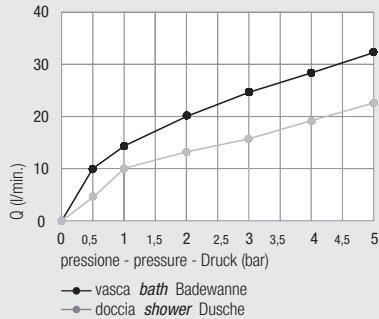
con deviatore **click-clack** (Art. 1502 KS)  
with **click-clack** diverter (Art. 1502 KS)  
mit **click - clack** (Art. 1502 KS)

**DZR**  
Available

Diagramma di portata  
(uscita libera)

Flow diagram  
(free exit)

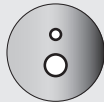
Diagramm der  
Durchflussleistung  
(freier Ausgang)



Piastre idonee - *Appropriate plates* - Passende Platten pag. 88



Art. 1182...



Art. 1192...



Art. 1192/P...



Art. 1030CA



Art. 1186...

Design



**Art. ....Q**

Versione quadrata  
*Square version*  
Quadratische Ausführung



**Art. ....MN**

Versione minimal ottone cromato o ABS  
*Minimal design version brass-chrome or ABS*  
Minimalistische Ausführung Verchromtes Messing oder ABS

kit prolunga sede cartuccia  
*Extension kit for cartridge seat*  
Verlängerungsbausatz Kartuschensitz

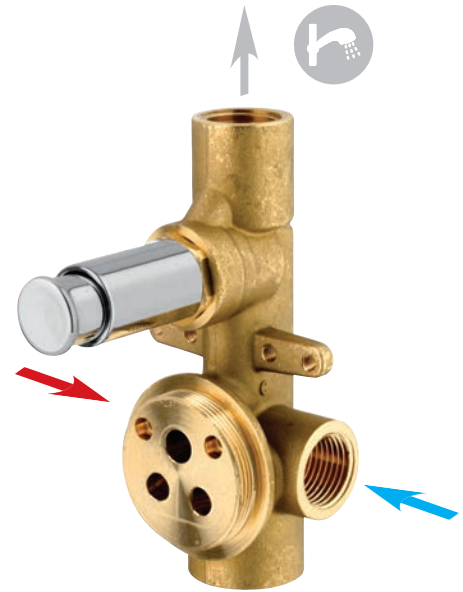
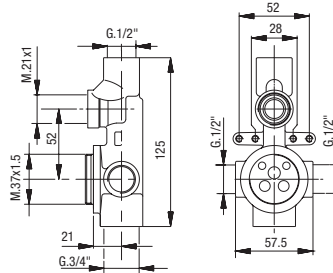
Art. 600/35



Art. 600/35 SC

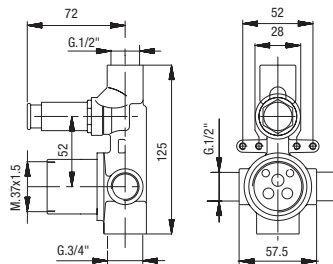


Art. 1180/35 K



Art. 1190/35 K

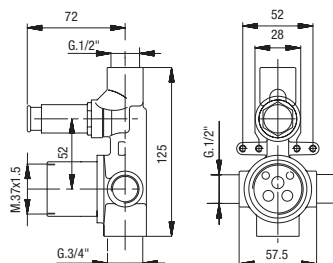
Con bicchiere  
*With cartridge ring seat*  
Mit Kartuschenringsitz



Art. 1190/35 K SC

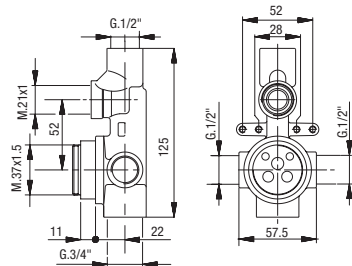


Con cappuccio scorrevole  
*With sliding sleeve*  
Mit Schiebehaube



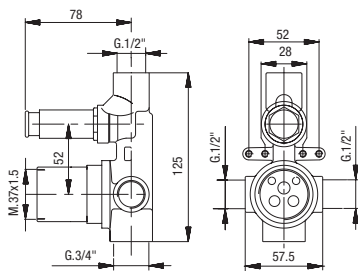
**Versione prolungata**  
**Extended version**  
**Erweiterte Version**

**Art. 1180/35 AL K**



**Art. 1190/35 AL K**

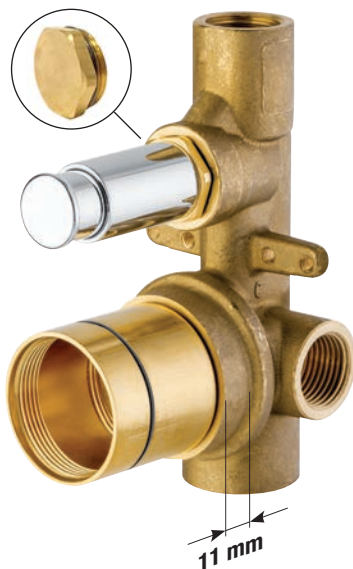
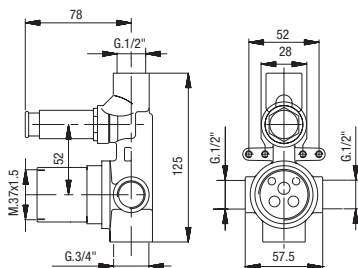
Con bicchiere  
*With cartridge ring seat*  
Mit Kartuschenringsitz



**Art. 1190/35 AL K SC**



Con cappuccio scorrevole  
*With sliding sleeve*  
Mit Schiebehaube



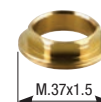
**Art. 1013/35**  
Anello sede cartuccia  
*Cartridge ring seat*  
Kartuschenringsitz



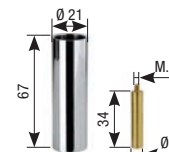
**Art. 1003SF**  
Cappuccio ABS  
*ABS cap*  
ABS-Kappe



**Art. 1004BS**  
Ghiera  
*Ring nut*  
Gewindehülse



**Art. 610**  
Prolunga deviatore  
*Diverter extension*  
Verlängerung Umstellventil



**Art. 1468**  
Anello sede cartuccia  
*Cartridge ring seat*  
Kartuschenringsitz



**Art. 1465**  
Cappuccio scorrevole  
*Sliding sleeve*  
Schiebehaube



**Art. PR42**  
Protezione mix  
*Mix protection*  
Schutzvorrichtung Mixer



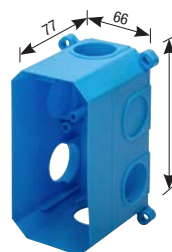
**Art. PR20**  
Protezione in plastica  
*Plastic protection*  
Kunststoffschutzvorrichtung



**Art. 3180 TAP**  
Tappo deviatore  
*Diverter cap*  
Umlenkcappe



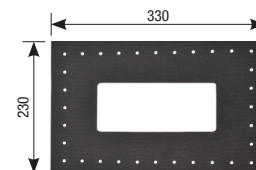
**Art. 3181CG (pag. 97)**  
Scatola di assemblaggio  
*Multipurpose assembling box*  
Montagegehäuse



**Art. 3183**  
Coperchio scatola  
*Box cover*  
Gehäuseabdeckung



**Art. 3181ME**  
Membrana isolante  
*Insulating membrane*  
Isolierungsmembran



**Art. 3185**  
Prolunga G. 1/2"  
*Extension G. 1/2"*  
Verlängerung mit 1/2"-Drehung



**Art. 3181G1/2**  
Guarnizione G. 1/2"  
*Gasket G. 1/2"*  
Dichtung mit 1/2"-Drehung



**Art. 3186**  
Prolunga G. 3/4"  
*extension G. 3/4"*  
Verlängerung mit 3/4"-Drehung



**Art. 3181G3/4**  
Guarnizione G. 3/4"  
*Gasket G. 3/4"*  
Dichtung mit 3/4"-Drehung

