

# Deviatore ceramico

## Ceramic diverter

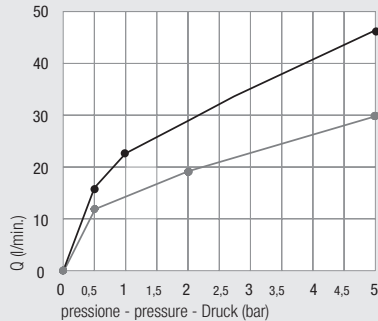
### Keramik-Umstellventil

**DZR**  
Available

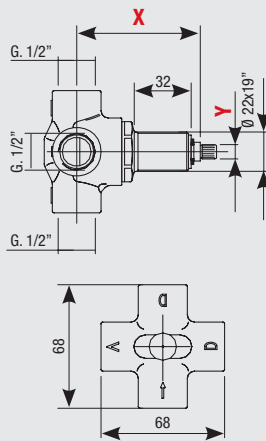
Diagramma di portata  
(uscita libera)

Flow diagram  
(free exit)

Diagramm der  
Durchflussleistung  
(freier Ausgang)



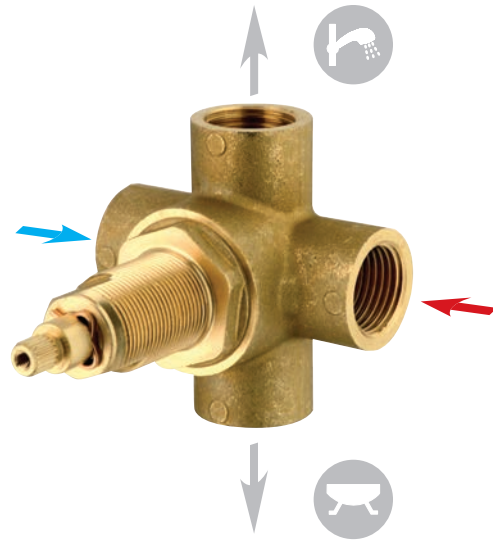
● uscita vasca - bath exit - Ausgang Badewanne  
● uscita doccia - shower exit - Ausgang Dusche



X	Y
72	BR. Ø 7,65 x Z=20 BR. Ø 8 x Z=24
83,5	BR. Ø 7,65 x Z=20 BR. Ø 8 x Z=24
92	BR. Ø 7,65 x Z=20 BR. Ø 8 x Z=24
112,5	BR. Ø 7,65 x Z=20 BR. Ø 8 x Z=24

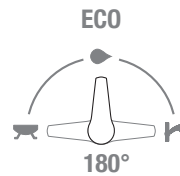
**2**  
exits

2 entrate, 2 uscite  
2 entries, 2 exits  
2 Eingänge, 2 Ausgänge



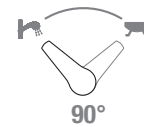
#### Art. 1110

CON economizzatore  
*WITH saving function*  
MIT Economiser

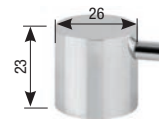


#### Art. 1110/90

SOLO deviatore  
*diverter ONLY*  
NUR Umstellventil



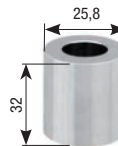
**Art. 00120**  
Maniglia deviatore  
*Diverter handle*  
Umstellgriff



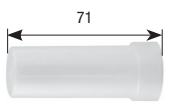
Adattatore  
*Ring adaptor*  
Adapter  
**Art. 2501 A** Ø 26X19"  
**Art. 2502 A** Ø 27X19"  
**Art. 2504 A** G.3/4"



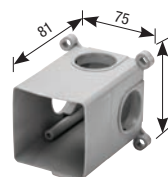
**Art. 00080**  
Coprifiletto deviatore cromato  
*Diverter cover thread*  
Verchromte Gewindeabdeckung  
für das Umstellventil



**Art. PR22/19**  
Protezione coprifiletto  
*Thread protection*  
Gewindeabdeckungsschutz



**Art. 3188**  
Scatola di assemblaggio  
*Multipurpose assembling box*  
Montagegehäuse



**Art. 3189**  
Piastra copriscatola  
*Box cover plate*  
Abdeckplatte des Kastens



**Art. 3188ME**  
Membrana isolante  
*Insulating membrane*  
Isolierungsmembran



**Art. 3181G1/2**  
Guarnizione G.1/2"  
*Gasket G.1/2"*  
Dichtung mit 1/2"-Drehung

