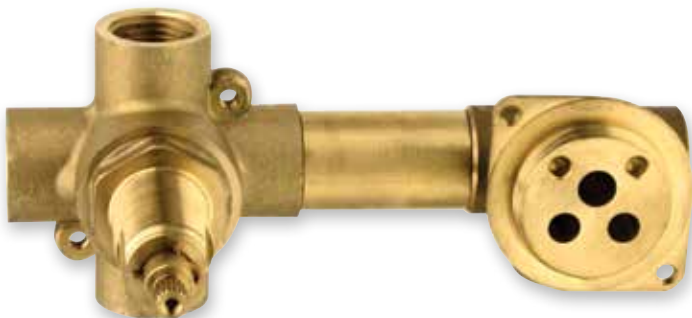


MISCELATORE DA INCASSO Ø 35 CON DEVIATORE CERAMICO ORIZZONTALE

CONCEALED MIXER CARTRIDGE Ø 35 WITH HORIZONTAL CERAMIC DIVERTER

EINBAU-MISCHBATTERIE Ø 35 MIT KERAMIK-UMSTELLVENTIL, HORIZONTAL

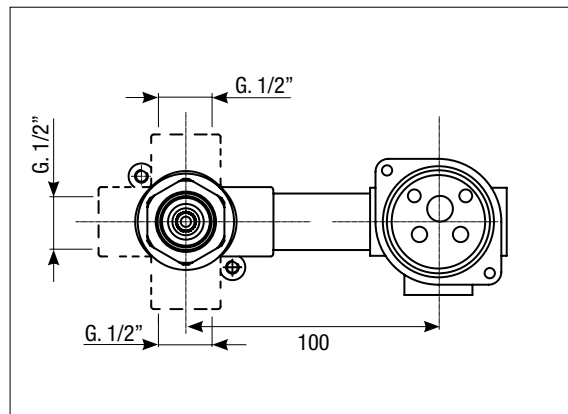


Art. 404

Corpo doccia con deviatore 3 vie - orizzontale

Shower mixer with 3 ways ceramic diverter - horizontal

Duschkörper mit 3-Wege-Umstellventil - horizontal



Art. 405

Corpo doccia con deviatore 2 vie - orizzontale

Shower mixer with 2 ways ceramic diverter - horizontal

Duschkörper mit 2-Wege-Umstellventil - horizontal

Art. 1024/404

Art. 1024/405

completo di scatola di montaggio

"system box" (pag. 70)

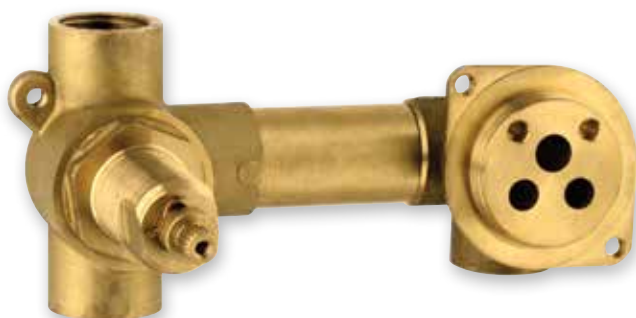
with assembly box

"system box" (page 70)

vollständig mit Montagegehäuse

- "System box" (pag. 70)

Art. 1024/406



Art. 406

Corpo doccia con deviatore 2 vie - orizzontale

Shower mixer with 2 ways ceramic diverter - horizontal

Duschkörper mit 2-Wege-Umstellventil - horizontal



ACCESSORI / ACCESSORIES / ZUBEHÖRTEILE

Art. 1013/35

Anello sede cartuccia
Cartridge ring seat
 Kartuschenringsitz



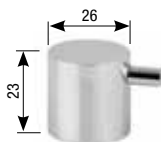
Art. 00050

Anello fissaggio piastra per miscelatore
Plate fixing ring - mixer
 Plattenbefestigungsring für Mischbatterie



Art. 00120

Maniglia deviatore
Diverter handle
 Umstellgriff



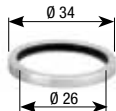
Art. 00080

Coprifiletto deviatore cromato
Diverter cover thread
 Verchromte Gewindeabdeckung Umstellventil



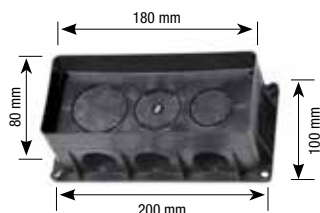
Art. 00040

Anello fissaggio piastra per deviatore
Plate fixing ring - diverter
 Plattenbefestigungsring für Umstellventil



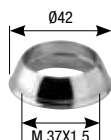
Art. 00097

Scatola di assemblaggio
System box
Multipurpose assembling box
System box
 Montagegehäuse - System box



Art. 1003SF

Cappuccio ABS
ABS cap
 ABS-Kappe



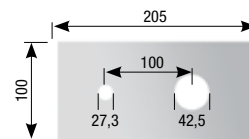
Art. 1004BS

Ghiera
Ring nut
 Gewindehülse
 M.37x1,5



Art. 1024

Piastra cromata
Chromed plate
 Verchromte Platte



Art. 00097ME

Membrana isolante
 330x230 mm
Insulating membrane
 330x230 mm
 Isolierungsmembran
 330x230 mm



Art. 00097GU1

Anello gomma foro 25,2 mm (3/4")
O-ring 3/4"
 Gummiring mit einer Bohrung
 von 25,2 mm (3/4")



Art. 00097GU2

Anello gomma foro 19 mm (1/2")
O-ring 1/2"
 Gummiring mit einer Bohrung
 von 19 mm (1/2")



Art. 00097GU3

Tappo ø 33 mm
Plug ø 33 mm
 Stopfen ø 33 mm

