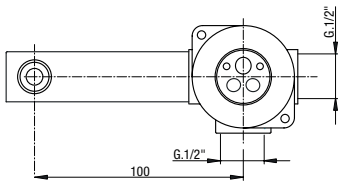
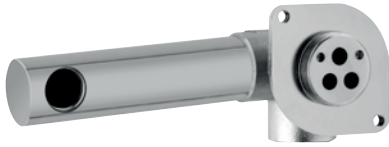


**Art. 1175/25**



**Art. 1027/325**



completo di scatola di montaggio "system box" (pag. 78)  
*with assembly box "system box" (page 78)*  
mit Montagegehäuse - "System box" (pag. 78)

## Accessori - *Accessories* - Zubehörteile

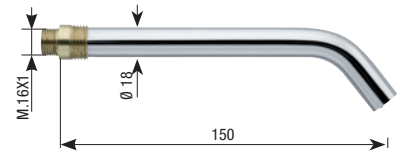
**Art. 1013/25**

Anello sede cartuccia  
*Cartridge ring seat*  
Kartuschenringsitz



**Art. 325**

Bocca tonda  
*Round spout*  
Runde Auslauf



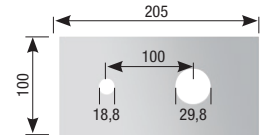
**Art. 00105**

Anello fissaggio piastra per miscelatore  
*Plate fixing ring - mixer*  
Plattenbefestigungsring für Mischbatterie



**Art. 1027**

Piastra cromata  
*Chromed plate*  
Verchromte Platte



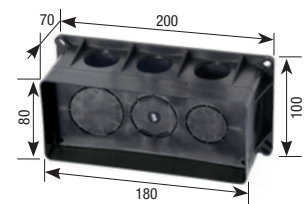
**Art. 00110**

Anello per supporto  
*Shower holder ring*  
Ring für Halterung



**Art. 00097**

Scatola di assemblaggio System box  
*Multipurpose assembling box*  
System box Montagegehäuse - System box



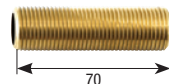
**Art. 00031**

Anello per bocca erogazione  
*Spout ring*  
Ring für Auslauf



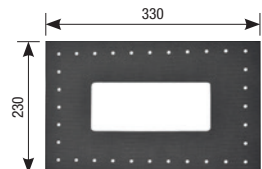
**Art. 269C0D**

Prolunga  
*Extension*  
Verlängerung  
G. 1/22



**Art. 00097ME**

Membrana isolante  
*Insulating membrane*  
Isolierungsmembran



**Art. 1003/25**

Cappuccio ABS  
*ABS cap*  
ABS-Kappe



**Art. 00097GU1**

Anello gomma foro 25,2 mm (3/4")  
*O-ring 3/4"*  
Gummiring mit einer Bohrung von 25,2 mm (3/4")



**Art. 1004/25**

Ghiera  
*Ring nut*  
Gewindehülse



**Art. 00097GU2**

Anello gomma foro 19 mm (1/2")  
*O-ring 1/2"*  
Gummiring mit einer Bohrung von 19 mm (1/2")



**Art. 00097GU3**

Tappo ø 33 mm  
*Plug ø 33 mm*  
Stopfen ø 33 mm

